

Framery 2Q



2Q Lounge



2Q Standard

Framery 2Q booth is designed for 4-6 people. It's the best place to co-create, brainstorm and have meetings. The superior sound insulation system ensures that your meetings won't disturb you or the office.

INTERIOR OPTIONS

- Standard or Lounge interior variations
- Available Options:
 - frame & exterior colours
 - sofa colours
 - table options
 - screen bracket
 - white board
 - booking system ready

FEATURES

- **Exterior:** painted sheet metal or brushed stainless steel
- **Glass:** sound control laminated glass
- **Frame & Table:** formica laminate on birch plywood with varnish trim
- **Solid walls , roof & floor:** a sandwich element of sheet metal, birch plywood, recycled acoustic foam & acoustic felt.

DIMENSIONS

- **Exterior:** 220 x 235 x 280 cm
- **Door:** doorway 86 cm; clear opening width 82 cm
- **Table:** height 72 - 90 cm
- **Weight:** 950 Kg
- **Air Flow:** 121.1 l/s / 436 m³/h

POWER

42W while in use

- LED lights: 24W
- Fans in total: 18W

Maximum power consumption

- 45W in total
- LED light ceiling: 27W

Outlets: up to 4 UK power sockets + 2 charging USB sockets + HDMI socket.

ACOUSTICS

In January 2021, a new standard ISO 23351 - 1 has been introduced to the industry to measure the level of sound insulation of enclosed spaces including acoustic pods. It produces a single figure called speech level reduction (DS,A) that describes the degree of speech privacy the product being tested provides.

Framery 2Q: >29 dB

SUSTAINABILITY

All wood materials that go into Framery pods come from FSC or PEFC sources. The felt is made from 60-70% recycled plastics

– a large percentage from recycled plastic bottles. The acoustic foam is made from 60% recycled polyester fibres. Both the fan and the light are triggered by a motion sensor to limit the amount of electricity used.

WELLBEING IMPACT

The open plan office is likely to be here to stay, but privacy is an issue. Noise pollution is an issue which affects many people, leaving people stressed and unable to concentrate. On average, people lose as much as 86 minutes a day due to the lack of privacy. People need quiet places to go for focused work and meetings. Framery has introduced privacy to the open plan office.

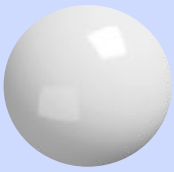
CERTIFICATES



welltek
an Office Blueprint brand

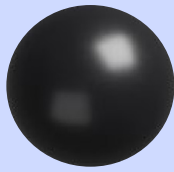
www.welltek.co | 26 Seward Street London EC1V 3PA
info@welltek.co | +44 (0) 20 7336 0657

EXTERIOR & FRAME COLOURS



WHITE (standard)

Exterior: GLOSSY RAL 9016
Frame: FORMICA K1009 MATT



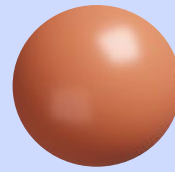
BLACK

Exterior: ULTRAMATT RAL 9005
Frame: FORMICA F2253 CR



CLOUDY GRAY

Exterior: ULTRAMATT RAL 850-2
Frame: FORMICA FO189



BURNED ORANGE

Exterior: ULTRAMATT RAL 410-5
Frame: FORMICA F2962



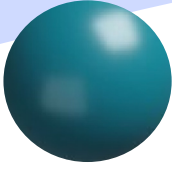
LEMON

Exterior: ULTRAMATT RAL 1012
Frame: FORMICA based on RAL 1012



MISTY BLUE

Exterior: ULTRAMATT RAL 620-3
Frame: FORMICA 1998



PETROL BLUE

Exterior: ULTRAMATT RAL 690-6
Frame: FORMICA based on RAL 690-6



PIGLET PINK

Exterior: ULTRAMATT RAL 940-6
Frame: FORMICA based on RAL 409-6



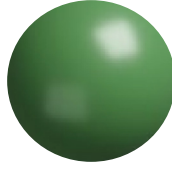
50's BLUE

Exterior: ULTRAMATT RAL 6034
Frame: FORMICA F7879



FOREST GREEN

Exterior: ULTRAMATT RAL 750-4
Frame: FORMICA F7967



SPRING GREEN

Exterior: ULTRAMATT RAL 230-6
Frame: FORMICA based on RAL 230-6



PURPLE RED

Exterior: ULTRAMATT RAL 3004
Frame: FORMICA F7966

UPHOLSTERY FABRICS



CLINT LEMON

CLINT SOFA - Standard
STEELCUT TRIO 3 #446



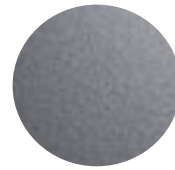
CLINT GRAY

FIORD 2 #151



BURNED ORANGE

DIVINA 3 #542



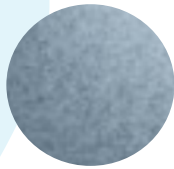
CLOUDY GRAY

DIVINA MD #733



50's BLUE

DIVINA MD #813



MISTY BLUE

DIVINA MELANGE 2 #731



PETROL BLUE

DIVINA MD #843



PIGLET PINK

DIVINA MD #613



PURPLE RED

DIVINA MD #633



FOREST GREEN

DIVINA 3 #876



SPRING GREEN

DIVINA MELANGE 2 #971

FIRE SAFETY: No flammable materials are used in Framery products. The fire safety of all surface materials, upholstery and acoustics materials of the products are tested and classified by either national or international standards. EN 13501-1 classification for the used materials is the following: acoustic wool is classified B-s1, dO, acoustic felt B-s2, dO and carpet Cfl-s1. All surface materials have also been tested against ASTM E84 / UL 723 and are classified at least as Class C. Outer frames with laminated surface are IMO certified (French Maritime Authority). Moulded foam used in Tovi stool seat meets CA TB 117:2013 requirements. Fabric meets the performance requirements of BS EN 1021-1 and 1021-2.

welltek

an Office Blueprint brand

www.welltek.co | 26 Seward Street London EC1V 3PA

info@welltek.co | +44 (0) 20 7336 0657