

# Framery O



**Framery O is ideal for important calls or video conferences. Have your discussions in privacy without disturbing your colleagues.**

## INTERIOR OPTIONS

- Standard or Video Conference Ready
- Available Options:
  - frame & exterior colours
  - seat colours
  - wireless charger
  - LAN
  - self-closing hinges
  - electromechanical code lock

## FEATURES

- **Exterior:** painted sheet metal or brushed stainless steel
- **Glass:** sound control laminated glass
- **Frame & Table:** formica laminate on birch plywood with varnish trim
- **Solid walls, roof & floor:** a sandwich element of sheet metal, birch plywood, recycled acoustic foam & acoustic felt.

## DIMENSIONS

- **Exterior:** 221 x 100 x 100 cm
- **Interior:** 200 x 80 x 95 cm
- **Door:** doorway 84 cm; clear opening width 78.5 cm
- **Table:** height 102.5 cm  
*regular:* 13 x 70 x 28.5 cm  
*wide:* 12 x 75 x 30 cm
- **Adjustable Stool:** TOVI; seat height - 68.5 - 81.5 cm
- **Weight:** 320 Kg
- **Air Flow:** 21.5 l/s / 77.4 m<sup>3</sup>/h

## POWER

Framery's products can be plugged into a wall socket. The pods have their own power supplies that give 24V DC to the lights and 12V DC fans. Both are operated by a motion detector. Inside the pods, there are UK power outlets for charging mobile devices.

## ACOUSTICS

In January 2021, a new standard ISO 23351 - 1 has been introduced to the industry to measure the level of sound insulation of enclosed spaces including acoustic pods. It produces a single figure called speech level reduction (DS,A) that describes the degree of speech privacy the product being tested provides.

Framery O: 30 dB

## SUSTAINABILITY

All wood materials that go into Framery pods come from FSC or PEFC sources. The felt is made from 60-70% recycled plastics – a large percentage from recycled plastic bottles.

The acoustic foam is made from

**welltek**  
an Office Blueprint brand

60% recycled polyester fibres. Both the fan and the light are triggered by a motion sensor to limit the amount of electricity used.

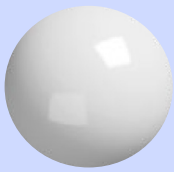
## WELLBEING IMPACT

Open plan office design can help with team work & company culture. But, this environment is not always conducive to actually getting work done. On average, people lose as much as 86 minutes a day due to the lack of privacy. People need quiet places to go for focused work, confidential calls & more. Framery allows you to introduce privacy to the open plan office.

## CERTIFICATES



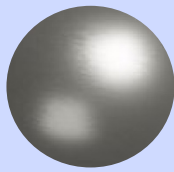
## EXTERIOR & FRAME COLOURS



**WHITE (standard)**  
Exterior: GLOSSY RAL 9016  
Frame: FORMICA K1009 MATT



**BLACK**  
Exterior: ULTRAMATT RAL 9005  
Frame: FORMICA F2253 CR



**BRUSHED STAINLESS STEEL**



**BURNED ORANGE**  
Exterior: ULTRAMATT RAL 410-5  
Frame: FORMICA F2962



**LEMON**  
Exterior: ULTRAMATT RAL 1012  
Frame: FORMICA based on RAL 1012



**MISTY BLUE**  
Exterior: ULTRAMATT RAL 620-3  
Frame: FORMICA 1998



**PETROL BLUE**  
Exterior: ULTRAMATT RAL 690-6  
Frame: FORMICA based on RAL 690-6



**PIGLET PINK**  
Exterior: ULTRAMATT RAL 940-6  
Frame: FORMICA based on RAL 409-6



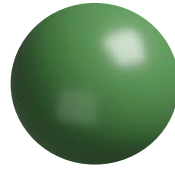
**50's BLUE**  
Exterior: ULTRAMATT RAL 6034  
Frame: FORMICA F7879



**CLOUDY GRAY**  
Exterior: ULTRAMATT RAL 850-3  
Frame: FORMICA FO189



**FOREST GREEN**  
Exterior: ULTRAMATT RAL 750-4  
Frame: FORMICA F7967



**SPRING GREEN**  
Exterior: ULTRAMATT RAL 230-6  
Frame: FORMICA based on RAL 230-6



**PURPLE RED**  
Exterior: ULTRAMATT RAL 3004  
Frame: FORMICA F7966

## UPHOLSTERY FABRICS



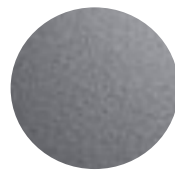
**LIGHT GRAY**  
TOVI STOOL Standard  
REMIX #123



**BLACK**  
REMIX 2 #183



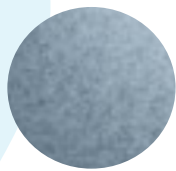
**BURNED ORANGE**  
DIVINA 3 #542



**CLOUDY GRAY**  
DIVINA MD #733



**50's BLUE**  
DIVINA MD #813



**MISTY BLUE**  
DIVINA MELANGE 2 #731



**PETROL BLUE**  
DIVINA MD #843



**PIGLET PINK**  
DIVINA MD #613



**PURPLE RED**  
DIVINA MD #633



**FOREST GREEN**  
DIVINA 3 #876



**SPRING GREEN**  
DIVINA MELANGE 2 #971



**LEMON**  
DIVINA MELANGE 2 #421

**FIRE SAFETY:** No flammable materials are used in Framery products. The fire safety of all surface materials, upholstery and acoustics materials of the products are tested and classified by either national or international standards. EN 13501-1 classification for the used materials is the following: acoustic wool is classified B-s1, dO, acoustic felt B-s2, dO and carpet Cfl-s1. All surface materials have also been tested against ASTM E84 / UL 723 and are classified at least as Class C. Outer frames with laminated surface are IMO certified (French Maritime Authority). Moulded foam used in Tovi stool seat meets CA TB 117:2013 requirements. Fabric meets the performance requirements of BS EN 1021-1 and 1021-2.

# welltek

an Office Blueprint brand

[www.welltek.co](http://www.welltek.co) | 26 Seward Street London EC1V 3PA

[info@welltek.co](mailto:info@welltek.co) | +44 (0) 20 7336 0657